

KH-Fenstertauchgrund

4507

Solvent-based synthetic resin dip-coating primer for industry and trade

PRODUCT DESCRIPTION

General

Fast-drying, reinforcing, white synthetic resin dip-coating primer. Improves the weathering resistance of the coating system through optimal moisture protection and wet adhesion. The product has been formulated without the addition of aromatic solvents.

Special properties and standards

- The coating is protected against blue stain and mould by a biocidal active substance.

Active substance:

2.4 g/kg (0.24 %) 3-Iod-2-propinylbutylcarbamate

Application area

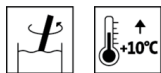


For dimensionally stable timber components for exterior and interior use, such as e.g. wooden windows and front doors.

The product is not suitable for use on Iroko (also known as Kambala) due to significant retardation of drying.

PROCESSING

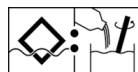
Processing instructions



- Please stir the product before use.
- The temperature of the product and object, and the room temperature must be at least +10 °C.
- The optimal conditions for use are between 15 - 25 °C with a relative atmospheric humidity between 40 - 80 %.
- The product is not weather-resistant without a topcoat!
- If there is an increase in viscosity on account of evaporation, this must be balanced out with Adlerol-Terpentinölersatz (7231) (Delivered viscosity: 40 second – 50 second in a 4 mm measuring cup. Application viscosity after addition of 20 % Adlerol-Terpentinölersatz (7231): 18 - 20 seconds in a 4mm measuring cup. The throughput time should under no circumstances be less than 18 seconds!) Before measuring the wood dust has to be screened.
- After immersion, the immersion basin must be covered since otherwise skin formation may occur. In case of a longer standstill the liquid of the immersion basin should be emptied and the content should be filtered and transferred into containers in order to prevent gelling / skin formation.
- Any change in the processing sequence, environmental conditions, non-observance of instructions or the use of products not listed may have an unfavourable effect on the result.
- Please follow our **ARL 300 - Working guideline for coating dimensionally stable and limited dimensionally stable construction elements - General part** along with all standards and guidelines for window construction.

Application technique

ca. 20% 7231



ca. 20% 7231

	Flow coating	Immersion
Diluent	Adlerol-Terpentinölersatz (7231)	
Diluent amount added (%)	20	
Applied quantity per application (g/m ²)	100 - 120	

Attention: Do not spray the product!

The shape and surface condition of the workpiece as well as the type of application influence the actual consumption. Accurate values for consumption must be obtained by applying trial coats in advance.

Drying times

(at 23 °C and 50 % rel. humidity)



16h

Sandable and recoatable:	approx. 16* h
--------------------------	---------------

*with horse chestnut after approx. 24 hours

On types of woods rich in extracts (such as oak, iroko), drying may be delayed.

The figures given above are reference values. The drying time depends on the type of substrate, coat thickness, temperature, air exchange and relative atmospheric humidity.

To ensure perfect drying, good room ventilation must be provided.

Lower temperatures and/or high level of atmospheric humidity can increase the drying time.

Avoid direct sunlight!

Cleaning the working equipment

7231

With Adlerol-Terpentinölersatz (7231) immediately after use.

SUBSTRATE**Type of substrate**

Wood in accordance with the guidelines for window construction.

Substrate property

The substrate must be dry, clean, capable of holding the paint, free from separating substances such as grease, wax, silicone, resin etc. and free from wood dust, as well as tested for suitability for coating.

Wood moisture

13 % ± 2 %

Substrate preparation**Wood sanding:**

Hardwoods: Grit size 150 - 180

Softwoods: Grit size 100 - 150





COATING SYSTEM**General**

The following coating systems are exemplary.

Primer coat

1 x KH-Fenster tauchgrund (4507)

Intermediate drying: approx. 16 hour(s)

Intermediate sanding 	Grit size 240 – 280 Remove sanding dust.
Intermediate coat	1 x Aquawood Intercare ISO (5503) or 1 x Aquawood Intercare SQ (5522) or 1 x Aquawood Intercare ES (5501) Intermediate drying time: approx. 4 hours
Intermediate sanding 	Grit size 220 – 240 Remove sanding dust.
Finishing coat	1 x Aquawood Covatop XT 20 (5020) or 1 x Aquawood Covapro 20 (5023)
For front doors	An additional application of Aquawood Protect (5128) (colourless two-component varnish) is necessary.
ORDERING INFORMATION	
Size of trading unit	6 kg, 32 kg
Colour shades / Glosslevels	Standard colour(s): Weiß (4507050000)
Supplementary products	Adlerol-Terpentinölersatz (7231) Aquawood Covapro 20 (5023) Aquawood Covatop XT 20 (5020) Aquawood Intercare ISO (5503) Aquawood Intercare SQ (5522) Aquawood Protect (5128) Please refer to the corresponding technical data sheets of the products.
FURTHER DETAILS	
Durability / storage  	Min. 5 year(s) in the original sealed containers. Make sure the product is protected against moisture, direct sunlight, frost and high temperatures (above 30 °C). Close opened containers well and use up the content as soon as possible.
Technical specifications	VOC content of the ready-to-use mixture: Limit value according to Directive 2004/42/EC for KH-Fenster-Tauchgrund (Cat A/h): 750 g/l. KH-Fenster-Tauchgrund contains a maximum of 430 g/l VOC.

Safety information



The product is only suitable for the industrial and professional use.

When sanding, use at least a P2 dust filter as personal safety equipment to protect against abrasive and wood dust. In case of hardwood (especially for Beech, Oak) a dust filter P3 is recommended.

The inhalation of paint aerosols during spray application must generally be avoided. This is ensured by the proper use of a respirator (combination filter A2/P2).

Further information on the subject of safety during transport, storage and handling as well as disposal can be found in the relevant safety data sheet. The current version can be accessed on the Internet at **www.adler-lacke.com**.
